



Timber House Resort ,Ao Nang – Make your holiday memorable

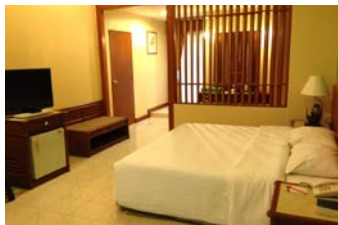
Timber House Resort is located right in the middle of Ao Nang beach area and is associated with Krabi Resort, which is the only resort in Ao Nang that has a private beachfront area. Ao Nang beach is the most popular beach in Krabi, with white sandy beach and interesting array of shops, bars, spas and thai massage and restaurants.

Timber House Resort is only 30 minutes away from Krabi International Airport. Timber House features quality accommodation at reasonable price in great location. Krabi is an ideal getaway destination teeming with natural attractions including white sandy beaches, fascinating coral reefs, numerous large and small islands and verdant forests with caves and waterfalls. Krabi is the location of two world class beaches Ao Nang and Railay which offer numerous diving trips, restaurants, shops etc. Additional attractions in the province are stunning limestone cliffs and rock formations which make it a heaven for rock climbers and a National Park located approximately 40 kilometers outside of town with lakes, caves and spectacular natural scenery.

ACCOMMODATION

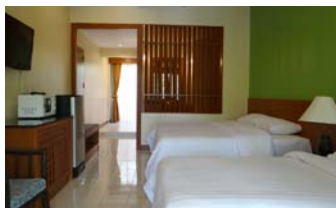
Themed Concept : Modern contemporary décor in lush tropical garden settings.

Timber House Resort provides spacious 51 guestrooms, all of which have private en-suite facilities and full 3-star in-room amenities. TIMBER HOUSE is the place surround by a tropical garden landscape, beautiful Thai botanical species and tranquil environment Thai will make your stay perfect and memorable.



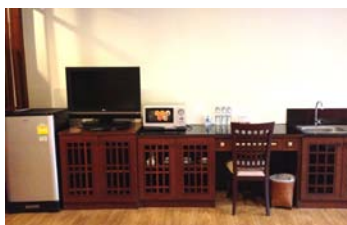
Superior Rooms

- Total Room : 35 rooms
- Size : 38sq.m
- Double Bed : 18 rooms
- Twin Bed : 17 rooms



Superior Family

- Total Room : 10 rooms
- Size : 40sq.m
- Double Bed : 10 rooms
- Twin Bed : N/A rooms



Deluxe Family 1 bedroom

- Total Room : 4 rooms
- Size : 40sq.m
- Double Bed : 2 rooms
- Twin Bed : N/A rooms





Deluxe Family 2 bedroom

Total Room : 2 rooms
 Size : 50sq.m
 Double Bed : 1 rooms
 Twin Bed : N/A rooms

Room features

All room types feature the following standard amenities: -

- Thai contemporary décor
- En-suites facilities with shower or bathtub or both (Superior rooms only feature shower, while Deluxe Family Rooms feature both bathtub and shower)
- Individually controlled air-conditioning
- Make-up table
- Fully stocked mini bar
- Hair dryer
- Tea and coffee making facilities
- IDD telephone
- In-room safe deposit box
- Broadband Internet access on Wi-Fi (surcharge)
- Private terrace / balcony with chairs
- Satellite TV, including CNN, BBC, Deutsche TV, etc.
- Microwave is available in our Deluxe Family Rooms.

RESTAURANTS & BAR

The Fish Restaurant offers a classic Thai and European cuisine, in a tranquil and relaxing atmosphere. Extensive choice of seafood BBQ is available at night with romantic set up.

GUEST SERVICE & FACILITIES

- Broadband Internet Access (surcharge)
- Car parking spaces (complimentary)
- Tour services
- Swimming pool
- Airport transfer service
- Playground
- Medical Clinic (doctor on call)
- CCTV and security 24 hours
- Complimentary Safe deposit box at the reception (separate from the in-room safe)

SPORT&RECREATION

- | | | |
|---------------|------------------|------------|
| • Sightseeing | • Diving / Scuba | • Swimming |
| • Sunbathing | • Bird watching | • Canoeing |
| • Fishing | • Rock climbing | • Sailing |
| • Snorkeling | • Snooker | • Cycling |
| • Jogging | | |

GENERAL INFORMATION

Check-in / Check-out
 Credit Cards

Check in 02.00 p.m. Check-out 12.00 p.m.
 VISA, AMEX & Master card.

Date Opened: 2006

Date Last Renovated: October 2007



Distance From:

Ao-Nang night market.....	100 meters	Ao-Nang boxing stadium.....	2 KM
Krabi Town.....	20 KM	Tesco Lotus.....	25 KM
Krabi International Airport.....	25 KM	Big C.....	24 KM
Hot spring waterfall.....	70 KM	Outlet Village.....	24.50 KM
Emerald pool.....	80 KM	Tiger cave Temple.....	22 KM
Railay bay by long tail boat.....	15 minutes	Phi Phi Island by speed boat.....	45 minutes

How to get to Krabi

By air: There are several airlines operating scheduled flights from Bangkok. These include Thai Airways International, Nok Air and Air Asia. The trip takes 1.20 hours. For more information, please visit www.krabiairport.org . Bangkok Airways runs scheduled flights from Koh Samui to Krabi. More details please visit: www.bangkokair.com .

On international routes, there are direct scheduled flights from Singapore and Malaysia. Thai Air Asia runs scheduled flights from Malaysia; Tiger Airways operate flights to Krabi from Singapore. There are also chartered flights from Europe, which normally operate during winter season. Direct chartered flights operators include Tui (Sweden and Denmark) and Fin Air (Finland).

By bus: From Bangkok, there are frequent buses departing from the Southern Bus terminal. Comfortable air-con buses are available at reasonable prices. The trip takes about 12 hours. For more information, please visit: www.transport.co.th

HOTEL CONTACT DETAILS

Website : www.krabitimberhouse.net

157 Moo 2, Ao Nang Beach, Muang, Krabi 81000 Thailand

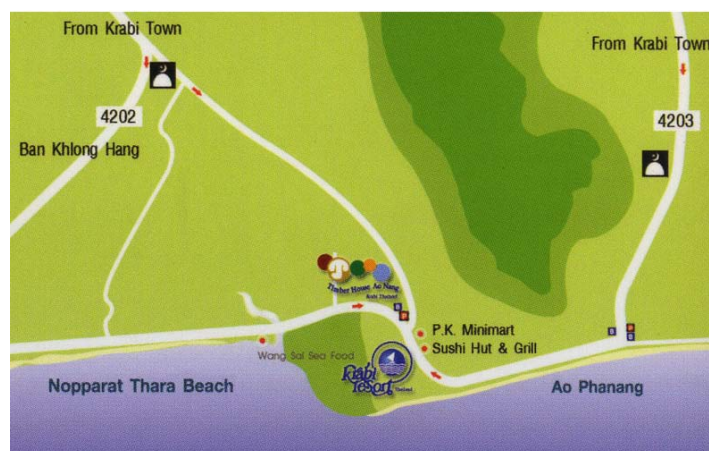
Tel.+66 (0)7563 7046-9 | fax. +66(0)7563 7050

E-mail : reserv@krabitimberhouse.net

Bangkok Office : 93/23 1st Fl.,Hollywood Street Bldg.Phayathai Rd.,Ratchatevee Bangkok 10400 Thailand

Tel.+66(0) 2208 9165,+66(0) 2208 09710 | fax. +66(0) 2208 9166

E-mail : info@krabiresort.net



LATITUDE: 8°02'18.45"N
LONGITUDE: 98°49'04.94"E

Remarks: Timber House Ao Nang is one of the 3 properties under C Krabi Group. Other properties include Krabi Resort, Ao Nang beach (www.krabiresort.net), and Lanta Resort, Koh Lanta (www.lantaresort.net)



C. Krabi Group is a unique collection of beach resorts in the prime locations of Krabi offering the best hospitality services with Thai touches.